

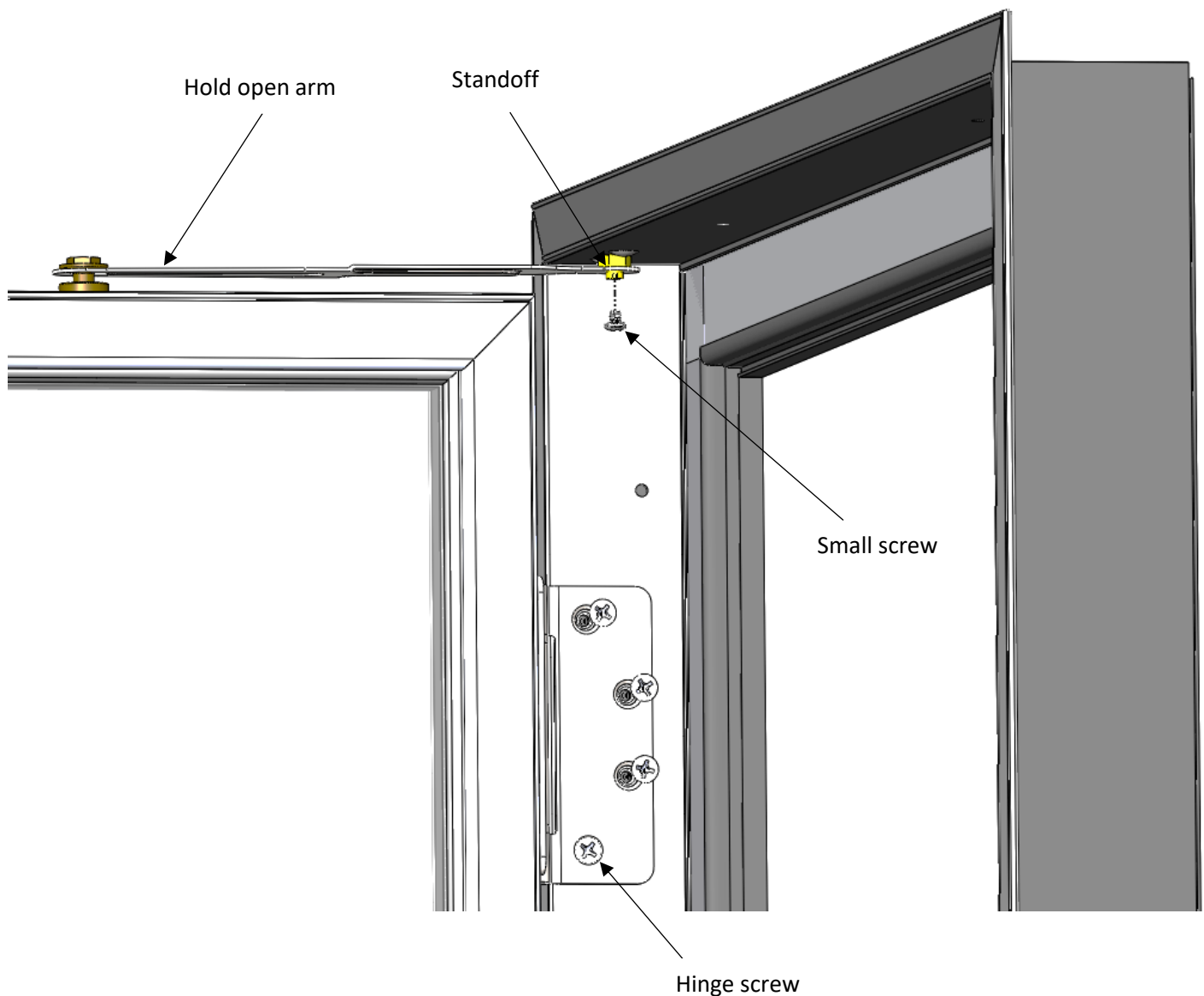
Pass-Thru Installation

Installation & Adjustment Instructions



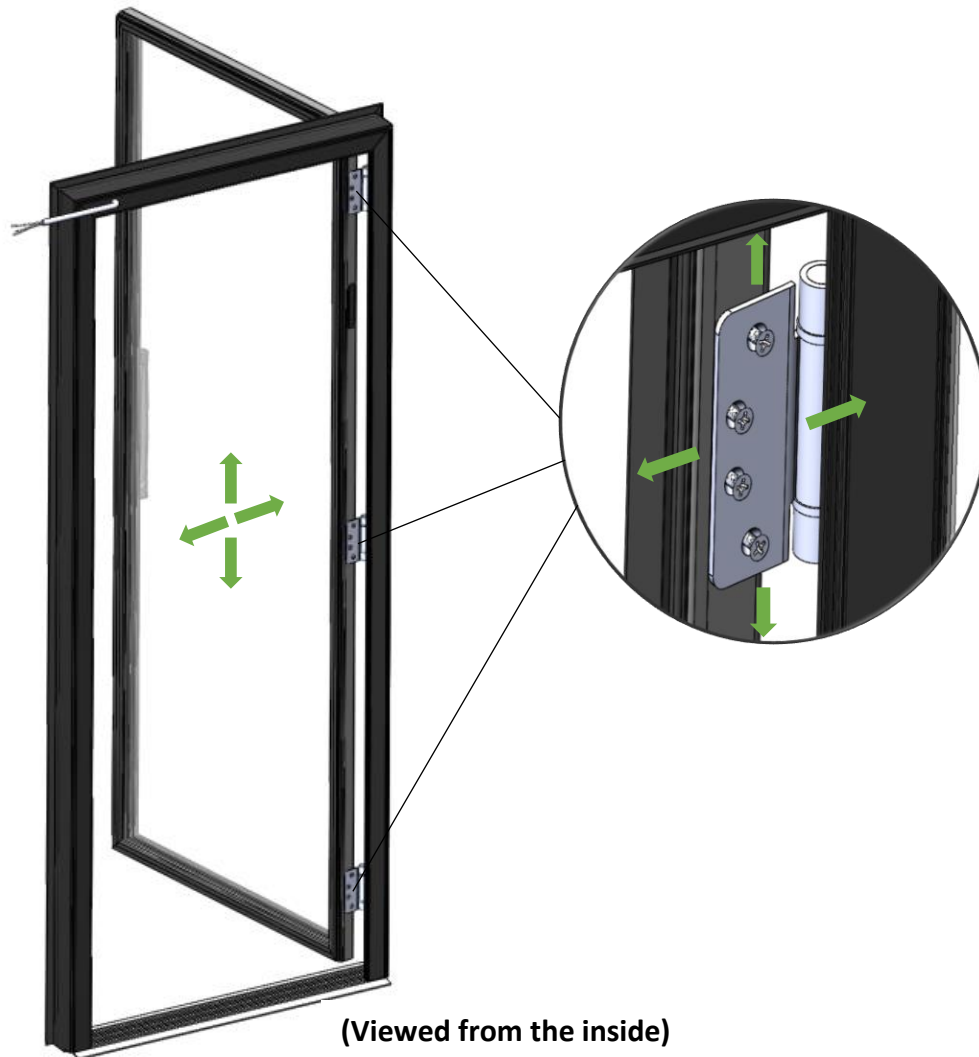
1. DOOR INSTALLATION

- 1.1. Unscrew and remove all screws from the frame (4 screws per hinge).
- 1.2. Align the door hinges with the holes on the frame and screw back the bottom screw on each hinge to maintain the door in place.
- 1.3. Install remaining screws.
- 1.4. Align hold open arm hole with frame hex standoff and install small screw as shown on picture bellow.



2. DOOR ADJUSTMENT

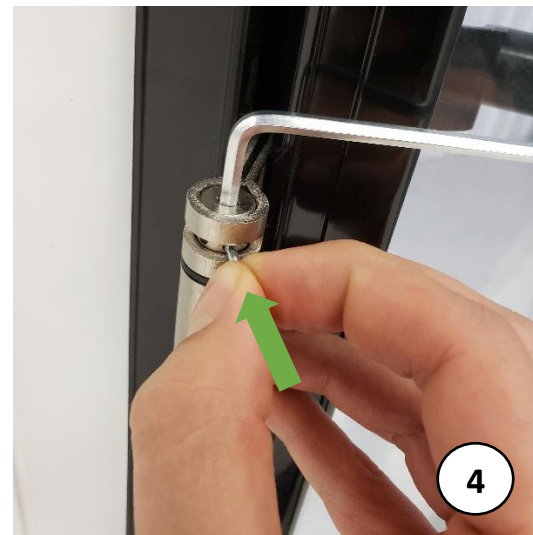
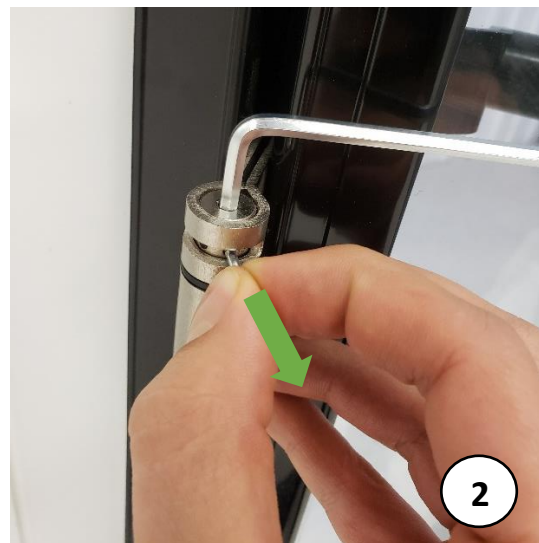
- 2.1. Open the door and locate the 12 screws that secures the door on the hinges.
- 2.2. Unscrew partially the 12 screws (4 on each hinge).
- 2.3. Move the door to desired adjustment and screw back permanently the 12 screws (one hinge at a time).



ADDING/REMOVING TORQUE TO HINGES

Please repeat all steps for each hinge, to ensure a uniform adjustment.

1. Place Allen key* in the door hinge adjustment capstan and rotate clockwise.
2. Hold the Allen key and remove stopper pin.
3. Turn clockwise (to add torque) or counter-clockwise (to remove torque).
4. Place pin in desired hole and remove Allen key.
5. Once the stopper pin has been reinserted, check the door closing tension. Repeat steps if needed.



*a kit is provided with the pass-thru, including an Allen key, a stopper pin, a tension adjustment rod and an instruction sheet on recommended adjustment settings.